

Independent Field Study Using A1cNow™ (Pacific Northwest) November 21, 2002

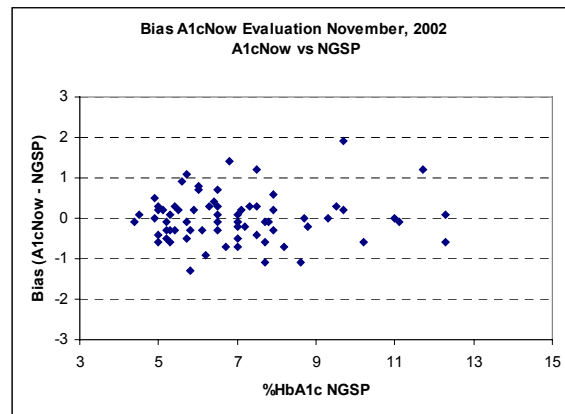
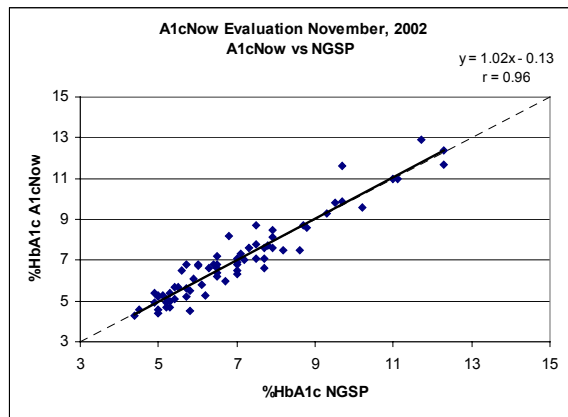
A large health care organization in the Pacific Northwest recently performed a correlation study using A1cNow. The laboratory took 78 EDTA venous samples, performed their routine laboratory testing, A1cNow testing, and sent an aliquot of the sample to the National Glycohemoglobin Standardization Program (NGSP) Secondary Reference Laboratory in Columbia, Missouri. All results were returned to Metrika, and to the health care organization.

Data analysis performed by Metrika showed the following. Bias between A1cNow and the NGSP lab was negligible (0.00 %HbA_{1c}), showing **accuracy of over 99%** for this study. Bias between the health care organization laboratory and A1cNow was small, -0.25 %HbA_{1c}, and bias between the health care organization laboratory and the NGSP laboratory was also small, +0.31 %HbA_{1c}. Regression statistics are presented in the table below.

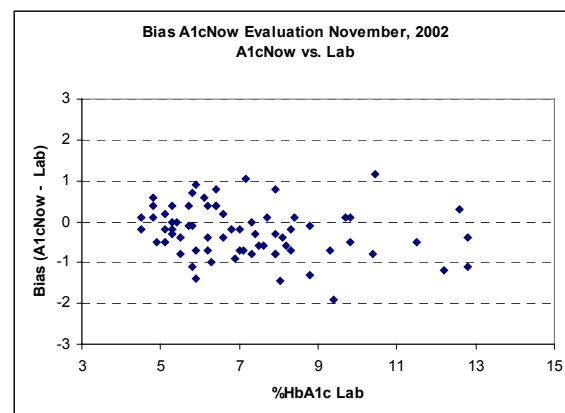
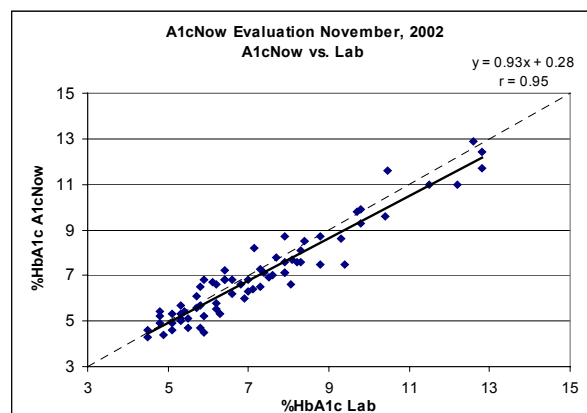
	Slope	Y-intercept	“r”	Average Bias %HbA _{1c}
A1cNow vs. NGSP	1.02x	-0.13	0.96	0.00
A1cNow vs. Lab	0.93x	+0.28	0.95	-0.25
Lab vs. NGSP	1.10x	-0.37	0.99	+0.31

Graphic representations of the data are shown, below.

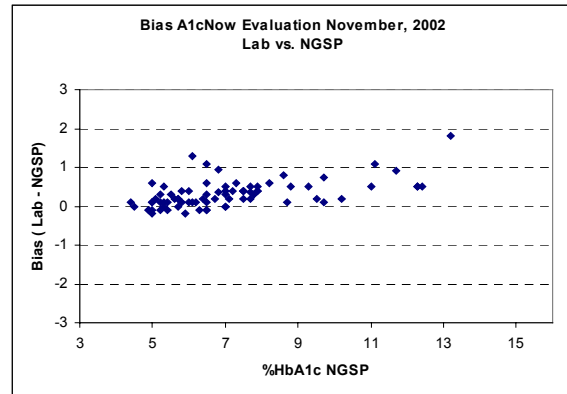
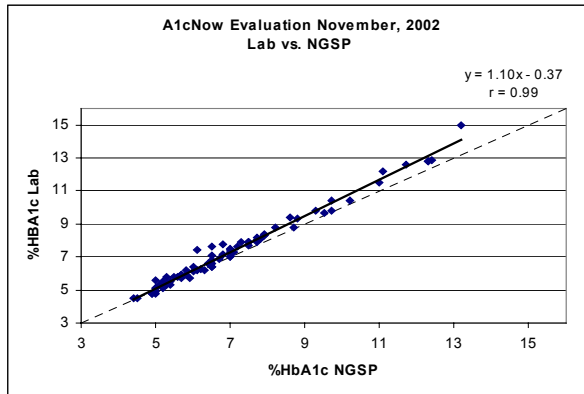
A1cNow vs. NGSP:



A1cNow vs. Laboratory:



Laboratory vs. NGSP:



Toll free customer service: (800) 748-5665
STAT Pharmaceuticals, Inc.
9545 Pathway Street, Santee, CA 92071
www.FluVaccine.com